

AD160 DIRECT OUT MOD

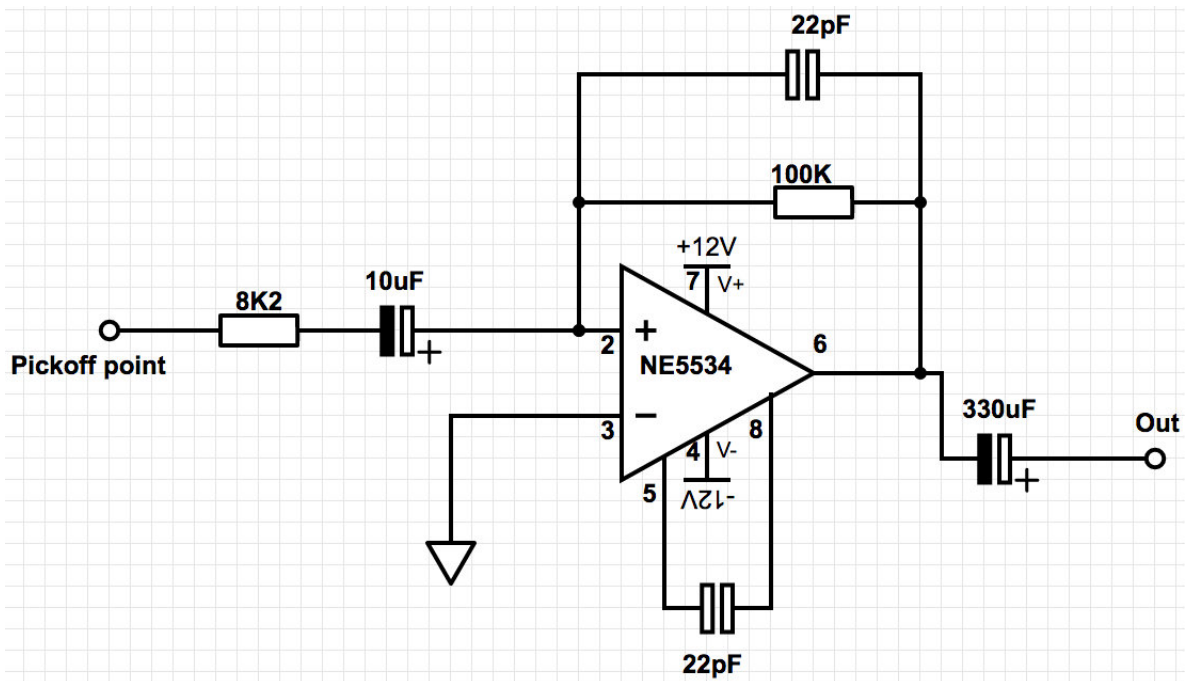


Add 3 direct outs to your Audio Developments 160 Mono mixer

AD160 DIRECT OUT MOD

This modification will add 3 direct outs on your AD160 mixer. The circuit is very easy to build but is quite difficult to fit the new boards in the mixer.

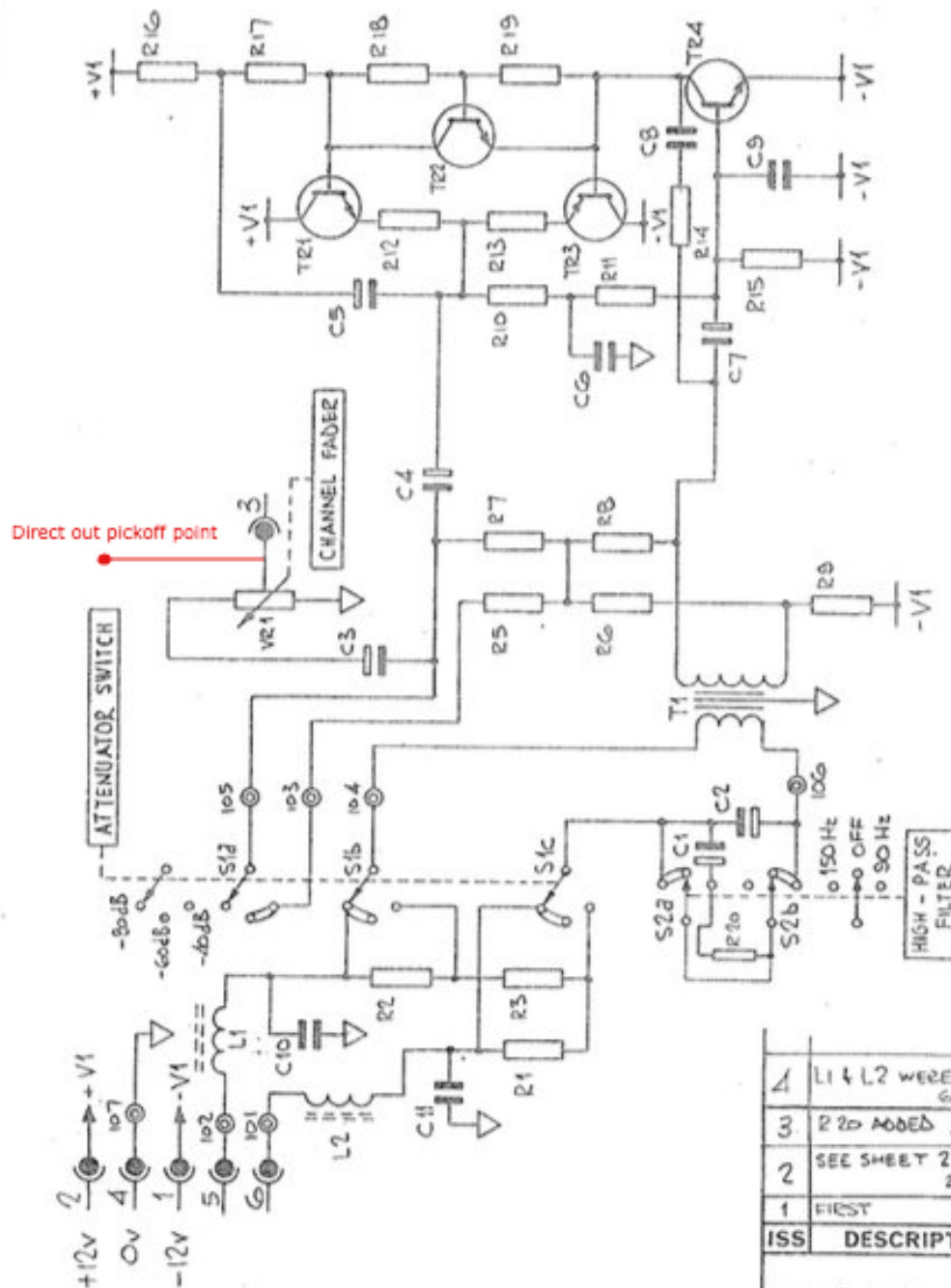
Step 1 – Add a buffer on every channel. It needs to be connected at the pickoff point.



DRG. No. SHT 1 OF 2
AD.160.D.29

THIRD ANGLE PROJECTION

DO NOT SCALE



4	L1 & L2 WERE 5μH	9.8.85	jsm
3	R20 ADDED	21.6.85	jsm
2	SEE SHEET 2	23.10.84	jsm
1	FIRST	9.12.83	jsm
ISS	DESCRIPTION	SIG.	

Drawn 9.12.83 jgm	Scale	Unstated Tolerances	MICROPHONE AMPLIFIER CIRCUIT DIAGRAM (MANUAL) (MK II)	Audio Developments Ltd., Hall Lane, Walsall Wood, Staffs
Checked	Material	2 Dec. Pl. ± 0.10 3 Dec. Pl. ± 0.05		DRG. No. SHT 1 OF 2 AD.160.D.29
Approved	Finish	Fractions $\pm \frac{1}{64}$ Metric $\pm 2\text{mm}$		

Step 2- Change the output XLR connector 3pin for an XLR 7pin. You can use this connector to send out the channel 1, 2, 3 direct outs and the balanced mix bus.

